

Other ACYFS Programs

RESIDENTIAL CARE:

Shoshone Place

Alpha House

Anoka Ranch

Nisqually Nest

COMMUNITY SERVICE



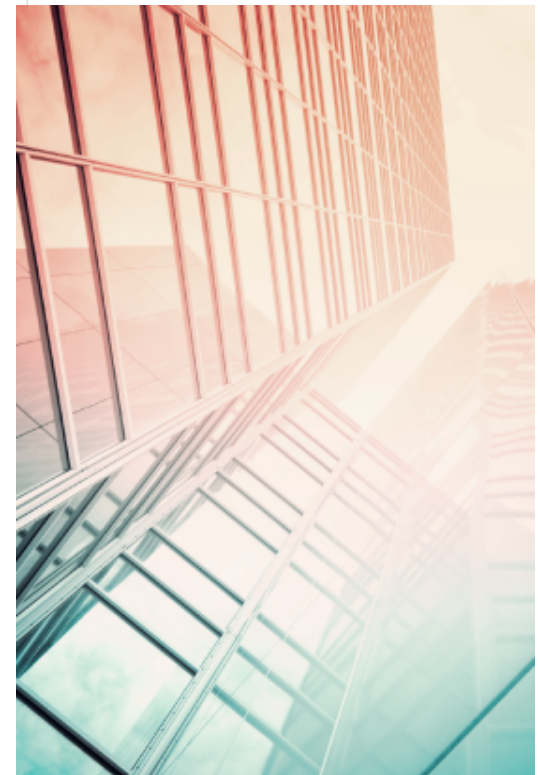
ALPHA CONNECTION

Alpha Connection
Youth & Family
Services
22675 Anoka Rd.
Apple Valley, CA
92308

Recipient Name
Address
City, ST ZIP Code

Alpha Connection Youth and Family Services

Children's Residential Intensive Services



OUTPATIENT SPECIALTY MENTAL HEALTH SERVICES

Alpha Connection Youth and Family Services (ACYFS) Specialty Mental Health Services is part of the San Bernardino County Mental Health Plan, and programmatically part of the Children's Residential Intensive Services (ChRIS). ACYFS is certified to provide Specialty Mental Health Services to San Bernardino County beneficiaries who are referred to the residential program by San Bernardino County Departments of Probation and/or Child and Family Services.

ACYFS adheres to the values and guiding principles of the Core Practice Model in all the service delivery activities, from admission through discharge. Services and interventions are delivered through a multiagency, collaborative approach that includes significant community-based support. A collaborative approach allows the development of a holistic perspective, and promotes networking on behalf of the youth, with a diverse set a formal and informal supports. A collaborative approach is essential and promotes inclusive thinking and problem solving.

Family focused services emphasize working with the family unit, to strengthen family capacity and promote optimal, healthy family functioning. Within a family-focused service delivery system, Parent/Family voice, choice and preference is ensured throughout the process. Parents and families shall always be core members of the collaborative team. The program will offer a true parent/family partnership, based upon shared beliefs and commitment to a collaborative process.

Cultural Competence

Services are culturally competent and respectful of the culture of the youth and their families. It is understood that each person is an individual and should be treated as such.

Contact Us

Alpha Connection Youth & Family Services
22675 Anoka Rd. Apple Valley, CA 92308
(760) 247-7930
theresa@alphaconnection.org
www.alphaconnection.org

Bridging Services

Transition services are needs driven, strength-based and family focused. Service providers monitor the client's progress and adapt the transition plan in a team decision making process through the Child and Family Team. Transition plans are determined in a culturally competent manner by working competently and in an affirming manner with each individual, respecting his/her dignity and values.

ACYFS also provides Intensive Care Coordination (ICC) and Intensive Home-Based Services (IHBS) to facilitate an optimally successful transition for the client and family. IHBS are intensive, individualized and strength based, needs driven intervention activities that support the engagement and participation of the client, his/her significant support persons, and to help the client develop skills and achieve the goals and objectives of the plan. IBHS are not traditional therapeutic services. Services are reduced, according to client and family response.